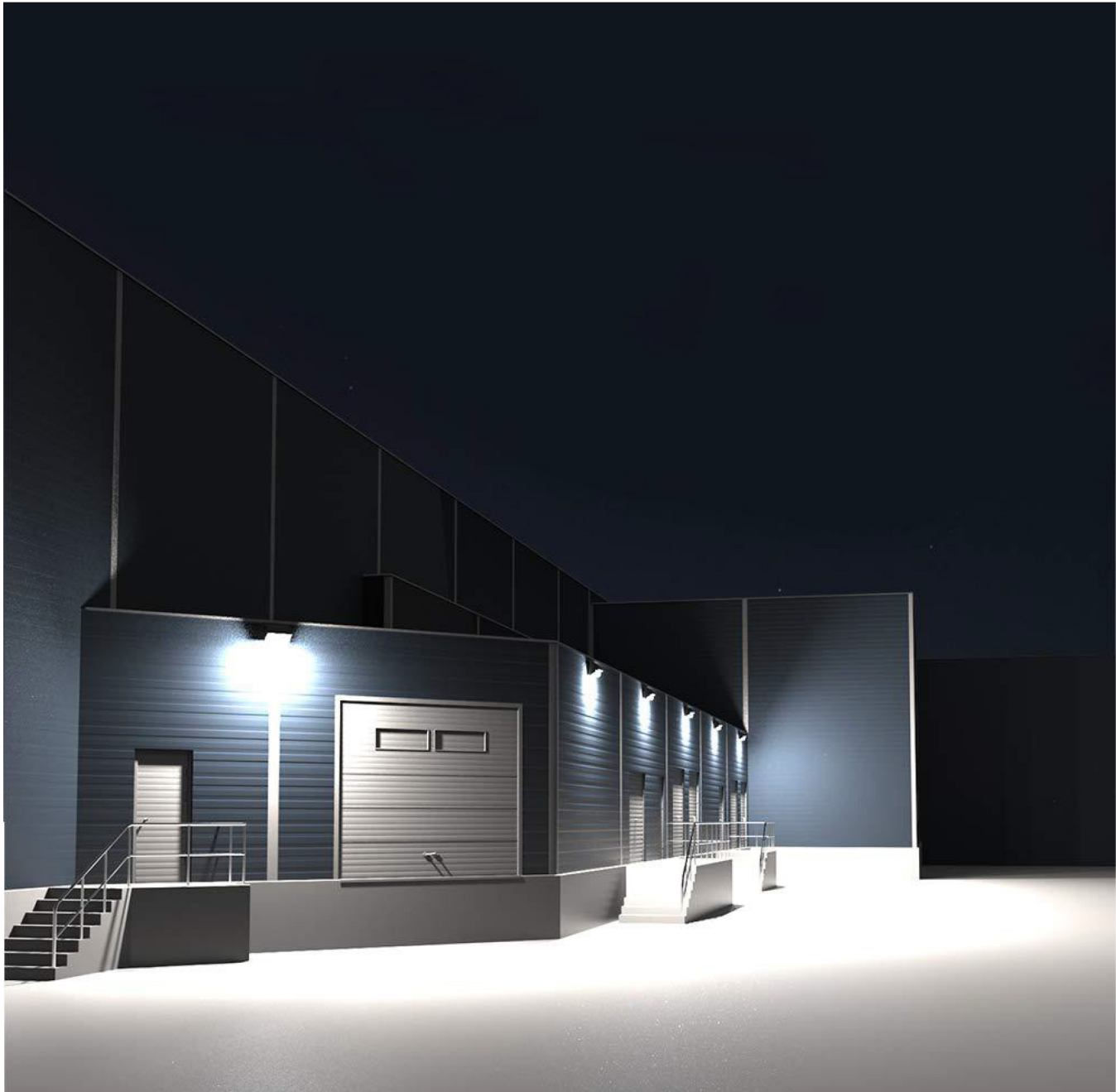


# LED Wall Pack Light

Commercial Lighting | Security Lighting





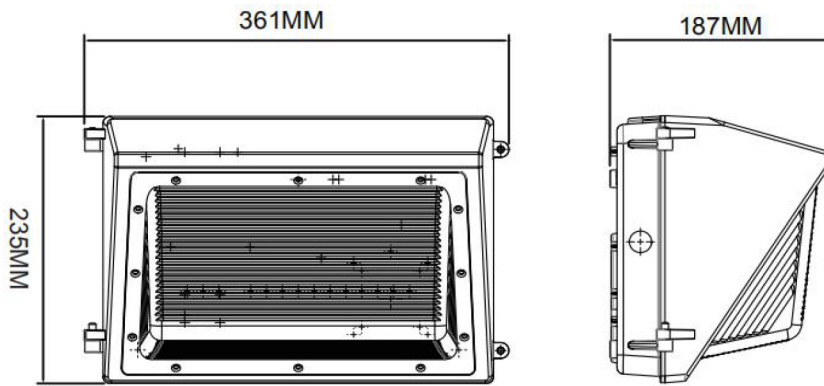
**This WPB Series Classic LED Wall Pack Light is designed for security lighting, it's widely used at pathway, hallway, perimeter, patio, entrance, stairway, house, garden, garage, yard, warehouse, factory, store, street, porch. With premium driver and Dust-to-Dawn photocell, this product lasts for 100000 hours and save up 80% on energy and operating costs. Inside with quality Lumileds LED as light sources, it's great solution to replace conventional fixtures.**

- Dusk-to-Dawn photocell available - Auto turn on at dusk and off at dawn
- Unique private classic design with solid durable construction
- Easy and fast installation - Direct mounting on wall or with J-Box
- PC lens and GLASS lens both available to meet different application
- Waterproof IP65 rating - suitable for all kinds of weather
- Good energy saving - save 80% electricity cost compared to traditional lamp
- 5 Years Warranty for whole fixture and power supply

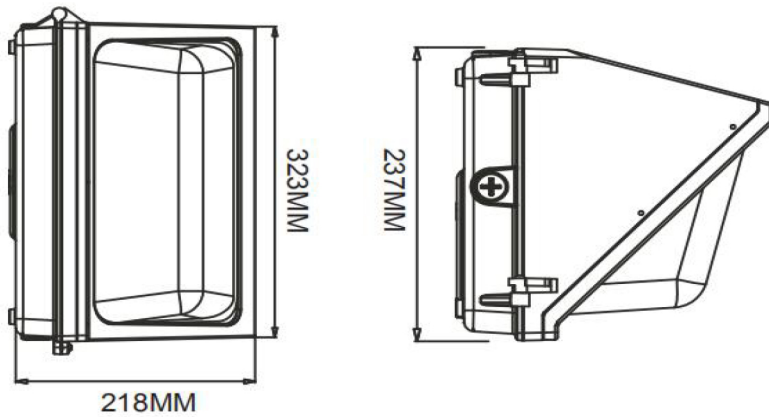
## General Specifications

Item No.	<b>N3-WPB120W</b>
System Power(±5%)	<b>120W</b>
Electrical Data	
Input Voltage	100-277 VAC
LED Driver	<b>UL listed Driver</b>
Power Frequency	50/60Hz
Power Factor	>0.9
THD	<20%
Optical Data	
System Efficacy	<b>120(±5%)</b> Lm/W tested based on 5000K Ra70
Luminous Flux (±5%)	<b>14400LM</b>
LED Chip	Lumileds SMD3030
Beam Angle	<b>100°</b>
Light Color	3000K / 4000K / 5000K / 5700K
CRI	>70 Ra
UGR	<19
Temperature Data	
IP Rate	IP65 wet/outdoor
Operating Temp	-40° ~ 131° F (-40° ~ 55° C)
Ambient Temp	-4° ~ 104° F (-20° ~ 40° C)
Storage Temp	-40° ~ 158° F (-40° ~ 70° C) R.H.≤85%
Lifespan	≥50000Hrs (Ta=30°C@L70) Operating
Fixture Material	Die casting Aluminum body
Safety Certification	ETL, DLC
Warranty	5 Years
Dimension & Packing Data	
Product size (LxWxH)	361 x 235 x 187mm (14,2" x 9,3" x 7,36")
Net Weight	3.0 KGS (6.61 LBS)
Gross Weight	3.5 KGS (7.72 LBS)
Carton size (LxWxH)	39*27*24.5cm ( 15,35*10,63*9,65 inch)
Qty/Carton	1 PC
Loading Qty/20' GP	800 CTNS / 800 PCS
Loading Qty/40' GP	1600 CTNS / 1600 PCS
Loading Qty/40' HQ	2000 CTNS / 2000 PCS
L.E.D. vs HPS / MH Equivalence	
LED	<b>120W</b>
HPS / MH	<b>400-500W</b>

# Dimensions

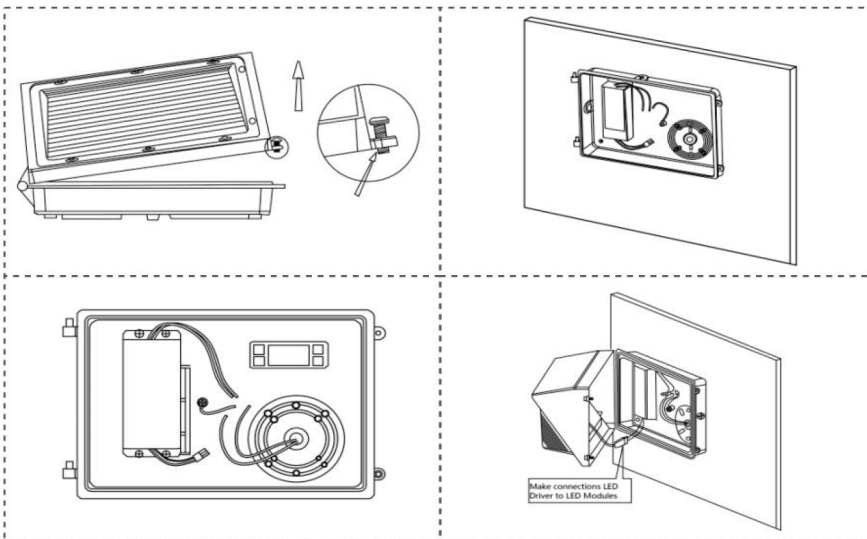


**PC Lens Size**



**Glass Lens Size**

## Installation Diagram



①.Remove 2 screws and lens cover

②.Knock out appropriate hole,  
Apply the gasket on the back

③.Connect the power wiring

④.Tighten the silicone seal, then  
Connect LED driver and LED module  
Fix the lens by screws

# Technical Specifications

## #Certificate

### RoHS approved

This product is tested by independent lab.with all green material.

### CE / ETL / DLC approved

This product have passed CE & ETL testing and is fully DLC approved.

### IESNA LM-79 and LM-80 Testing

Minglight fixture have been tested by independent lab. in accordance with IESNA LM-79 and LM-80 Testing

### Color Stability:

LED color temperature is warrantied to shift no more than 200K in CCT over a 50000 hours.

### Color Uniformity:

Minglight's range of CCT follows the guidelines of the American National standard for specification for the chromaticity of Solid State Lighting (SSL) Products,ANSI C78.377-2017

## #Installation

### IES Classification :

110° beam angles, the lighting output produces a oval shape distribution to cover the area.

### Mounting:

This product is direct mounting on wall mounting or with J-box  
The application including Warehouse, patio, entrance, stairway, house, Garage, outdoor facilities.

## #LED Characteristics

### Lifespan

100000 hours LED lifespan based on IES LM-80 results and TM-21 Calculation.

### Color Consistency

7-step MacAdam Ellipse binning to achieve consistent one by one color.

## #Smart Engine

### Dimming Driver

1-10V Dimming optional

### Smart Sensor

Photocell optional


## #IP Rating

Ingress Protection rating of IP65  
IP65 for dust and water

### Greenity:

Mercury or UV free.RoHS compliant components.Package boxes are made with recyclable material.

## #Smart solution options

Description	Picture	Function
Photocell		Auto turn on at dusk/night and off at dawn/daytime

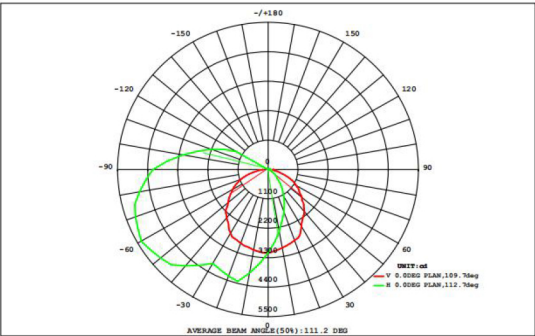
## #Trouble Shooting

Problem	Possible Cause	Solutions
LEDs stop working	The power line is improperly connected.	Reconnect the power cable.
	The power plug is loose.	Firmly plug the power in.
	The LED driver malfunctions.	Replace with new driver.
	The LED chip is damaged.	Replace with new LEDs.
LEDs flash on and off	The output of the driver is abnormal.	Replace with new driver.
	The LED chip breaks down.	Replace with new LED chip.

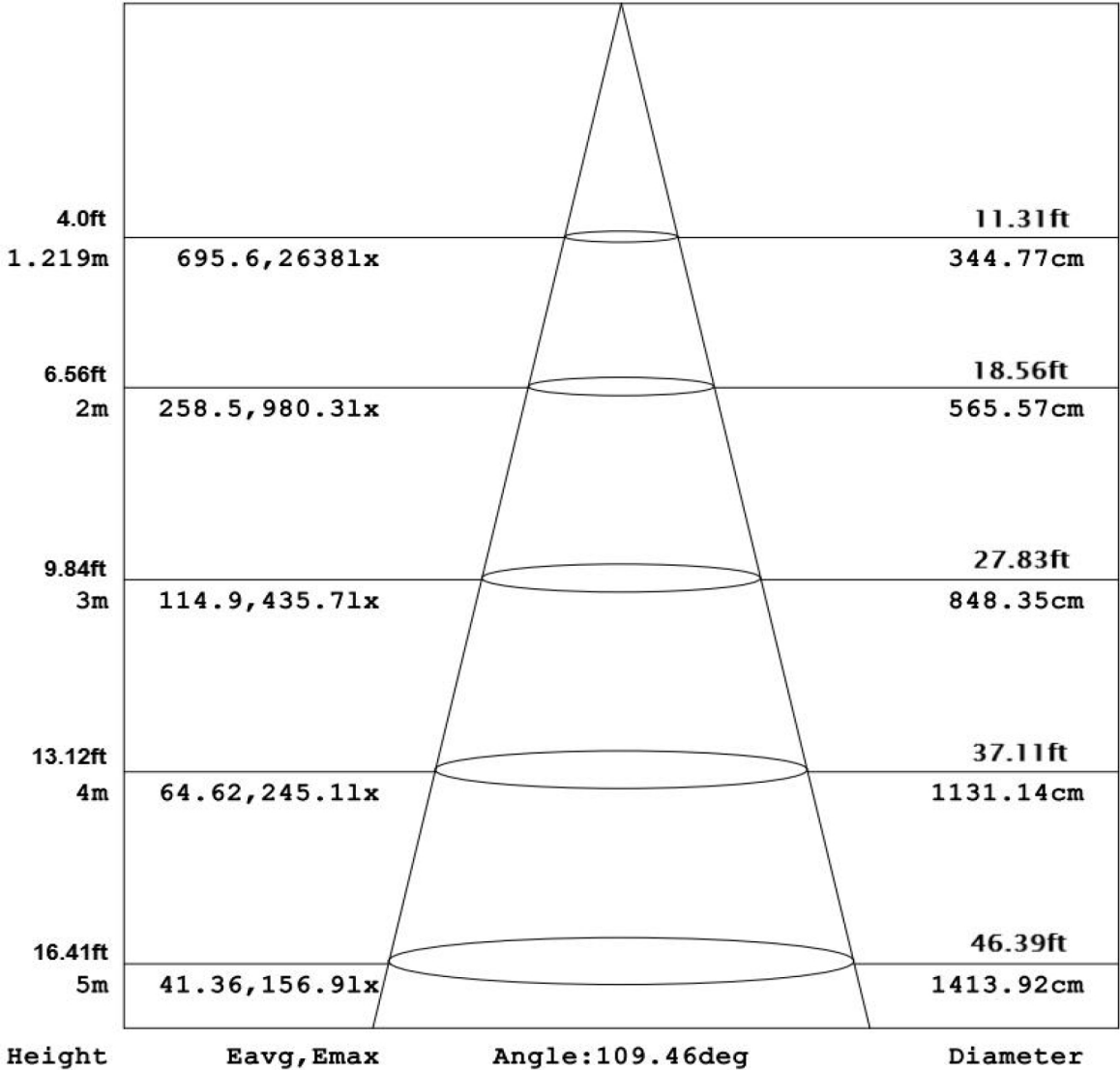
## #Warranty

our LED products will be free from defect in material and workmanship for a period of 5 years from the data of delivery to the end user including coverage of light output, color stability, driver performance and fixture.

Photometrics



DATA OF LAMP		Eff:112.96lm/W	
MODEL	ML-WPB-130W-5000K	Imax (cd)	5395
NOMINAL POWER (W)	130	AVAILABILITY (%)	96.6
RATED VOLTAGE (V)	277	Avai. FLUX (lm)	14462
NOMINAL FLUX (lm)	14978	LOR (%)	99.9
LAMPS INSIDE	1	TOTAL FLUX (lm)	14967
TEST VOLTAGE (V)	230	θ @50% (H,V)	110,113DEG



Suggested mounting height for best illumination effect: 20 to 30 feet (6 - 9 meters)

Wall Pack is widely used in pathway, hallway, perimeter, patio, entrance, stairway, house, garden, garage, yard, warehouse, factory, store, street, porch

## Project Cases

